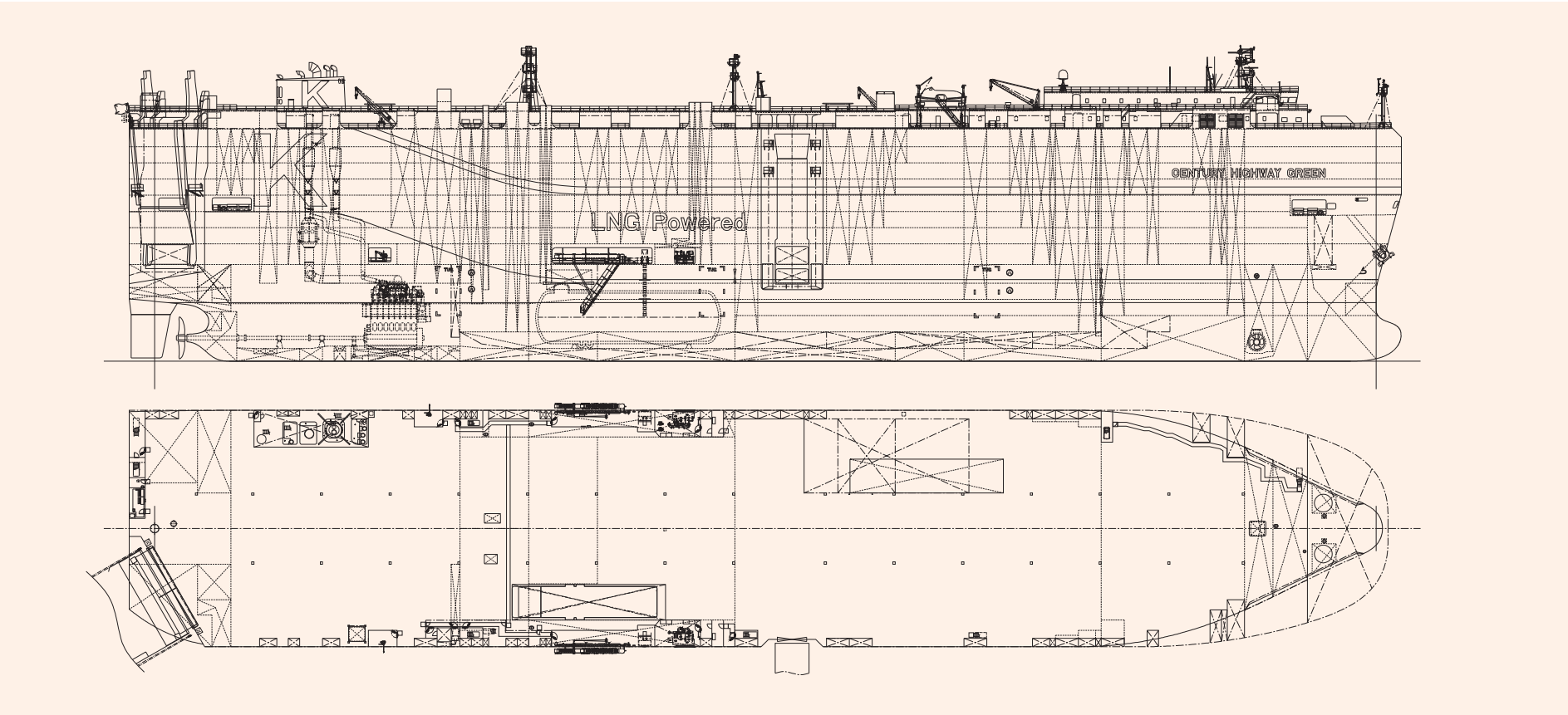


CENTURY HIGHWAY GREEN 7,080 Unit Vehicles Carrier 98

☐ Contents ☐ By Builder ☒ By Ship Type



CENTURY HIGHWAY GREEN 7,080 Unit Vehicles Carrier 98



PRINCIPAL PARTICULARS

Length (o.a.)	199.98 m
Breadth (mld.)	37.20 m
Depth (mld.)	36.51 m
Draft (ext.)	9.718 m (Summer draft)
Gross tonnage	73,515
Deadweight	16,844 MT

Main engine	MITSUI-MAN B&W 8S50ME-C9.6-GI-EGRBP
MCR (kw×min ⁻¹)	9,380 kW × 92.0 min ⁻¹
Speed (service)	abt. 18.0 knots
Complement	50 Persons
Classification	NIPPON KAIJI KYOKAI (NK) / DNV GL
Loading capacity (car/vehicle)	7,080 cars
Builder	Tadotsu Shipyard Co., Ltd.

SAKURA 503 Unit Car Carrier

99

☐ Contents ☐ By Builder ☐ By Ship Type



SAKURA 503 Unit Car Carrier 99

The 503 units car carrier SAKURA was completed in June 2021 at SHIN KURUSHIMA HIROSHIMA DOCKYARD CO., LTD. to the order of a Japanese Owner.

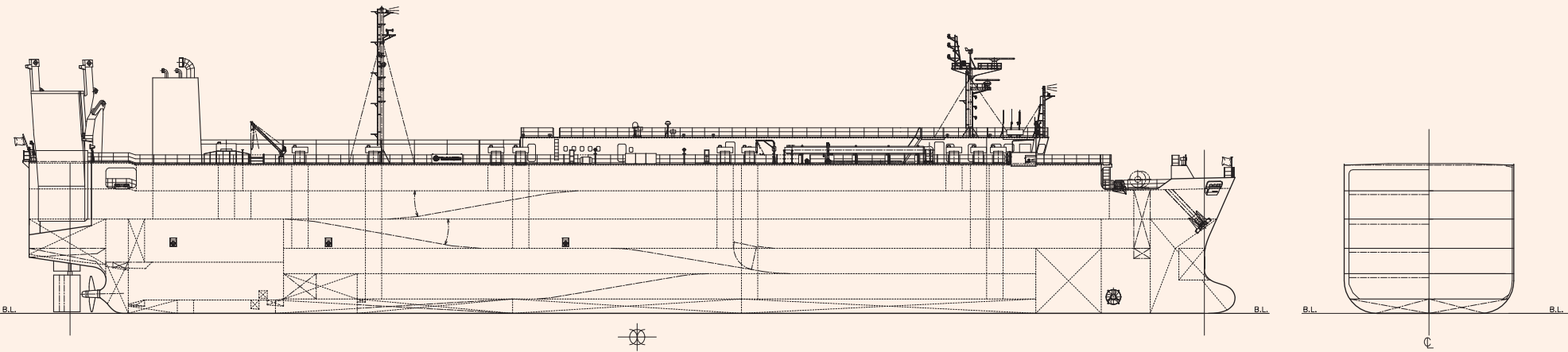
Features

- 1. The ship is designed and built for carrying cars.
- 2. The ship is designed and built as a single screw, diesel driven car carrier having a five (5) tiers car decks and one (1) tier accommodation deckhouse.

PRINCIPAL PARTICULARS

Length (o.a.)	118.03 m
Length (b.p.)	111.00 m
Breadth (mld.)	16.60 m
Depth (mld.)	14.52 m
Draft (mld.)	4.40 m
Gross tonnage	2,993
Deadweight	2,285 t

Main engine	MAKITA-MITSUI-MAN B&W 6L35MC6.1
MCR (kw x rpm)	3,900 kW x 210 min ⁻¹
NOR (kw x rpm)	2,925 kW x about 191 min ⁻¹
Speed (service)	16.0 knots
Complement	14 P
Classification	NK
Loading capacity (car/vehicle)	503 units
Builder	Shin Kurushima Hiroshima Dockyard Co., Ltd.



SAKURA LEADER 7,000 Unit Car Carrier 100

☐ Contents ☐ By Builder ☒ By Ship Type



SAKURA LEADER 7,000 Unit Car Carrier 100

The 7,000 units type car carrier SAKURA LEADER was completed in October 2020 at SHIN KURUSHIMA TOYOHASHI SHIPBUILDING CO., LTD. and delivered to Nippon Yusen Kabushiki Kaisha.

Features

- 1. This ship is 7,000 Units type next-generation car carrier equipped with dual fuel engine using LNG as main fuel, first in Japan. The ship equipped with an environmentally friendly the engine that can reduce CO2 emissions by more than 30% and almost no SOx emissions, etc. compared to conventional engines fueled by heavy oil.
- 2. The ship, which is keeping the length overall to less than 200m, and is expanded the breadth than conventional Panamax width, has increased cargo loading number. For this reason, fuel consumption per vehicle cargo is much better compared with the existing car carriers.
- 3. It is achieved lower fuel consumption by applying the following energy efficiency devices including Shin Kurushima Dockyard originally developed; A.S.FIN, TURBO-RING, SKEG FIN, K³ PROPELLER, AERODYNAMIC SCREEN, REACTION RUDDER, and applying LOW FRICTION TYPE SHELL PAINT.
- 4. By applying the partial bulkhead less structural method for hull construction, it can be applied One-way system of slope way of both side of ship, and it is very efficient for car loading/unloading operation accordingly.
- 5. Regarding loading/unloading equipments, the ship has a stern ramp (35m x 13.2m : SWL 30t) and a center ramp (22m x 4.3m : SWL 15t).

- 6. The ship's wheelhouse is the all-weather structure type. Therefore, it is improved workability of departure/arrival, the surrounding watch, operability and safety. The center console is considered the shape of the wheelhouse and person's movement. The consoles are equipped with all the equipment essential for maneuvering, monitoring,

route planning, etc. so that it can be operated efficiently. In addition, the consoles on the both wings are equipped with a multi-monitor for checking image of radar etc. and equipments required for departure/arrival. These equipments are satisfied the international regulations and are latest type.

PRINCIPAL PARTICULARS

Length (o.a.)	199.96 m	MCR (kW×rpm)	11,920 kW x 105 min ⁻¹
Length (b.p.)	196.00 m	NOR (kW×rpm)	8,940 kW x abt. 95.5 min ⁻¹
Breadth (mld.)	38.00 m	Speed (service)	18.0 knots
Depth (mld.)	35.54 m	Complement	30 P
Draft (mld.)	9.55 m	Classification	NK
Gross tonnage	72,285	Loading capacity (car/vehicle)	7,150 units
Deadweight	17,330 t	(others)	LNG Tank x 2sets
Main engine	Diesel United-Win GD 8X52DF x 1 set	Builder	Shin Kurushima Toyohashi Shipbuilding Co., Ltd.

